



WELCOME TO YEAR 2

General Information

Miss Ryan

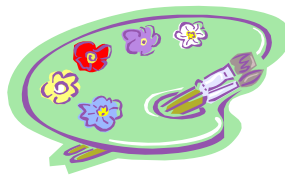
THE CURRICULUM – CORE SUBJECTS

- English
- Mathematics
- Science
- Religious Education
- Computing



FOUNDATION SUBJECTS

- PSHE/RSE
- History
- Geography
- Music
- P.E.
- Art
- D.T.



THE YEAR 2 DAY

- From **8:40** - children come into class.
- Daily visual timetable on display on whiteboard.
- 8.50 – the school day starts.

TIMETABLE

	8.50	9:20-10:15		10.30	10:45-12:00	LUNCH	1:00-3:10	
Mon	Little Wandle/ Phonics	English	BREAK	KS1 ASSEMBLY	Maths		RE	Art/DT
Tues	Little Wandle/ Phonics	English		CLASS WORSHIP	Maths		PE	Geography
Wed	Phonics	HYMN PRACTICE	Music	BREAK	Computing		Maths	PE
Thurs	Little Wandle/ Phonics	English	BREAK	CLASS WORSHIP	Maths		RE	PSHE
Fri	Phonics	English	HT ASSEMBLY	BREAK	Maths		Handwriting /spelling	Science

- P.E. lessons take place on Tuesday afternoon and Wednesday afternoon with Mr. Mazzone. These will be outdoors wherever possible.
- Please can you ensure your child comes to school wearing their full school P.E. kit on these days. If girls have pierced ears they must be able to remove their own earrings. Dark tracksuit bottoms may be worn in colder weather.
- This timetable may be subject to changes.

RELIGIOUS EDUCATION

- **Come and See**
- **Collective Worship**
- **Whole school assemblies- merits etc.**
- **Prayer table- special items to be displayed, linked to the topics**
- **Mothers Day Mass**



- In 2020, Relationships Education and Health Education became statutory for all primary schools in England.
- As a Catholic school, our mission is to support the spiritual, moral, social and cultural development of all of our pupils, rooted in the wisdom and teaching of the Church. The education of children in human sexuality is an important, precious and privileged responsibility.



LIFE TO THE FULL

- We are introducing a new programme this year called **Life to the Full** by Ten Ten Resources.
- **Life to the Full** has been approved by our diocese. Furthermore, Ten Ten Resources have entered into a partnership with the Catholic Education Service and the Department for Education to provide training for teachers in Catholic schools on the subject of the RHE statutory curriculum. Therefore, we are confident that this programme is a very good fit for our school.
- Further details and access to a parent portal will be sent out by Mrs Brown, our PSHE Lead.



RSE – JOURNEY IN LOVE - YEAR 2

Aim: To describe how we are growing and developing in diverse communities that are God given.

Children know and understand that they are growing and developing in a God-given community.

Examples of Year 2 activities:

- What is community?
- Explore school as a community
- How can we contribute to the community?
- As children of God, how should we help each other?

COME AND SEE YEAR 2 - THEMES

Come and See is developed through themes based on documents from the Second Vatican Council.

Autumn

Beginnings

Signs and Symbols

Preparations

Spring

Books

Thanksgiving

Opportunities

Summer

Spread the Word

Rules

Treasures

English

We will be using the book 'The Lonely Beast' to develop our writing skills. We will mainly focus on recounting stories in different ways. We will be learning about ways to improve our writing, especially using conjunctions to develop our ideas. After half term we will be looking at the book The Princess and the White Bear King. We will continue to write for different purposes and begin to explore non-fiction writing. For the first term there will also be a daily phonics lesson.

Art/DT

We will be developing our drawing and painting skills as well as our designing and making skills. In DT we will be exploring Freestanding Structures.

RE

We will continue to use the diocese recommended Come and See scheme. Our topics this term are:

- Family - Beginnings
- Baptism/Confirmation - Signs & Symbols of Baptism
- Advent/Christmas - Preparations

During our Faith Week we will be learning

Music

We will be developing our music skills through the exploration of simple, rhythmic patterns as well as listening to and appreciating different musical genres.

Science

Children will explore the differences between things that are living and things that have never been alive. We will investigate what living organisms need to stay alive and healthy. We will conduct experiments with an emphasis on how to carry out an experiment fairly. Our second topic will be exploring materials and their properties.

History/Geography

During Autumn 1 we will be learning about our seasons. We will explore how weather changes in patterns throughout the year and develop our mapping skills. In History we will learn about the Great Plague and the Great Fire of London and how they have shaped life today.

Mathematics

We will be focusing on the children's understanding of place value, addition, subtraction, multiplication and division. Each day we have a fluency focus to practice everyday maths skills.

Children will also use Sumdog to support their learning—logins will be sent home too.

Homework

Monday Spellings (to be tested every Friday)

Times Tables (after Christmas)-tested on Friday

Tuesday Reading Comprehension Due in on

Thursday

Wednesday Punctuation and Grammar Due in on

Friday

Thursday Little Wandle book handed out Due back

Monday

Friday Maths - Due in on Monday

Writing task/Topic - Due in Monday

Reading should be done daily and reading folders should be in school every Monday for book change. Library books will be changed on Friday.

Autumn Term 2023

Computing

This term we will be looking at 'Computing systems and networks' and 'Creating media' (with a focus on digital photography). We will be developing further our keyboard skills using a range of applications, and looking at the importance of being smart and keeping safe when online. applications, and looking at the importance of being smart and keeping safe when online.

Physical Education

We will be developing our fitness skills. We will invent our own games. Outdoor games with Mr Mazzone—Wednesday Tuesday pm fitness skills (outdoor where possible) Children to come to school in PE kit ONLY on these days. Tracksuit bottoms may be worn in colder weather.

PSHE & RHE

We will be discussing our feelings and relationships with others, at home, at school and in the community. In our PSHE lessons we will explore how we belong to a community, identifying similarities and differences between us.

In Autumn 2 we will explore how God created us individually, look at ways we can give thanks to God and explore British Values through the Rule of Law.

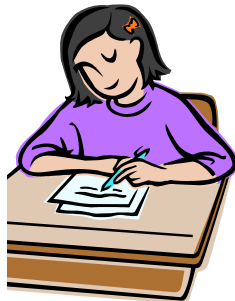
We will discuss the core 'Value of the month'.

September: Respect; October: Happiness;

November: Unity; December: Love

HOW CAN YOU HELP YOUR CHILD?

- Listening to your child read daily, asking questions, and recording this in the reading log.
- Helping with homework – work must be in pencil and presented neatly.
 - Spellings
 - Reading Comprehension
 - SPAG
 - Arithmetic
 - Writing
- **Practising Year 2 Common Exception Words and 2, 5 & 10 times tables regularly. These will be sent home in due course.**
- Talking to your child about topics they are covering in school.
- Visiting the library regularly.
- Visiting places, museums etc. that may be linked to our curriculum.
- Using the Internet to play games to support English/Maths skills or to research subjects covered. Spelling Shed, Sumdog, Numbots.
- Encouraging your child to read/write whenever possible e.g. writing a post-card on holiday, reading comics etc.



HOMework TIMETABLE

Monday	Spellings (to be tested every Friday) Times Tables (after Christmas)-tested on Friday
Tuesday	Reading Comprehension Due in on Thursday
Wednesday	Punctuation and Grammar Due in on Friday
Thursday	Little Wandle book handed out Due back Monday
Friday	Maths - Due in on Monday Writing task/Topic – Due in Monday

Reading out loud daily is vital for children's comprehension skills and to build the ability to read in public. Please make time for this every day. Reading together is encouraged, take turns to read a page!

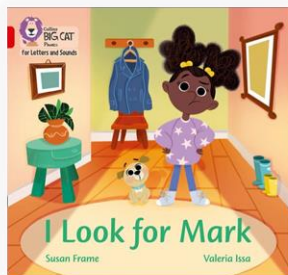
READING

- Little Wandle scheme is being continued until at least half term.
- Words will come home on a Monday and must be returned on Thursday. (Please have these in school every day.)
- Books will come home on Thursday and need to be returned on Monday. They will have read this book 3 times in school.
- Library books will be changed on Friday.

Please be aware that last year we lost a lot of Little Wandle books. This cost the school a great deal of money so moving forwards we will be charging £8 per lost book. Alternatively you could choose to replace the book from an online store e.g Amazon.

We keep records of the books and word cards given to individual children and the children will be reminded to hand it back to the adult during their reading groups. If they are unable to hand it back to the adult in this session they will be reminded to look for it at home. Failing a return after this reminder an email will be sent from the office.

We thank you for your help and understanding with this.



= £8



READING LOGS

- We would like children to read for at least 10 minutes a day.
- Please sign and comment for every book read. Reading logs to be in school every day.
- Other reading can be in any form, e.g. comics, newspapers, own home books. Please record as this helps us to see what the children like to read.

SCHOOL RULES

- Children are familiar with our school and classroom rules
- 'Steps' system in place as sanctions for not following these rules
- Children rewarded individually with merits/Headteacher awards.
- Class rewarded with marbles, which are collected to earn a marble treat



GDPR

(GENERAL DATA PROTECTION REGULATION)

- We value capturing and sharing the learning and experiences of your children using photographs. We have obtained your permission for the use of photos which may contain your children around the school and for use for a wider audience (i.e. web site or newspapers).
- We would like to make it clear how photos of your children may be used within the school. They may be shown in displays. Individual and groups photos could be used in exercise books that are sent home. As already mentioned, sometimes photos may have a wider audience e.g. our website, newsletter, Xavier publication and yearbook.
- You can contact the school office should your 'permissions' preferences change at any point or if you have any questions- preferably via email.
- We are happy for photos to be taken at special school events for family sharing only. We ask parents helping around school and on educational visits to not use their personal devices for photographs.
- We ask that parents do not publicly share any photos that show other children in any way, for example on Social media platforms such as Facebook.

OTHER REMINDERS:

- PE kit should only be worn to school on PE days. If your child has an after school club they will get changed in the hall.
- If you need to email about a class issue, please email the office.
- Please encourage independence in your child as much as possible, just as we do in school. This will help with transition to Key Stage 2.

PARENTAL SUPPORT

- Helping in school/school trips/sharing expertise/resources – all welcome
- Reading with children
- Support the PTA
- DBS check and Safeguarding MAT training essential for all school volunteers



Parents attending educational visits

We **always** appreciate and value volunteers on school trips – without them trips would not be able to take place.

Please be aware however that the school policy is that parents on school trips will **not** have their own children in their groups.

This is to ensure:

- The safeguarding at all times of ALL children in a group.
- The adult is free to focus on ALL children in the group for greater safety, rather than concentrating on their own child.
- Increased independence for the children who will need to be responsible for their own belongings.
- Greater social skills – School visits are great for friendship building and this does not happen for all children when they spend the day with their own parent. They are encouraged to eat and socialise in the company of their peers.
- Behaviour is better for all children when they are not with their parent.
- On occasions, there might be exceptional circumstances where we may ask a parent to accompany their child e.g. for medical or SEND reasons.

DATES FOR YOUR DIARY

- Class assembly: 22nd January 2.30pm (Monday)
- Mothers Day Mass – 8th March 9.00
- Year 2 leading whole school mass – 21st March
- Christmas Nativity – Tuesday 12th/Wednesday 13th

Please keep an eye on the dates in the newsletter for additions or amendments, including school trip dates.

Thank you for your support so far this
year.
We look forward to a happy, enjoyable
and successful year.

